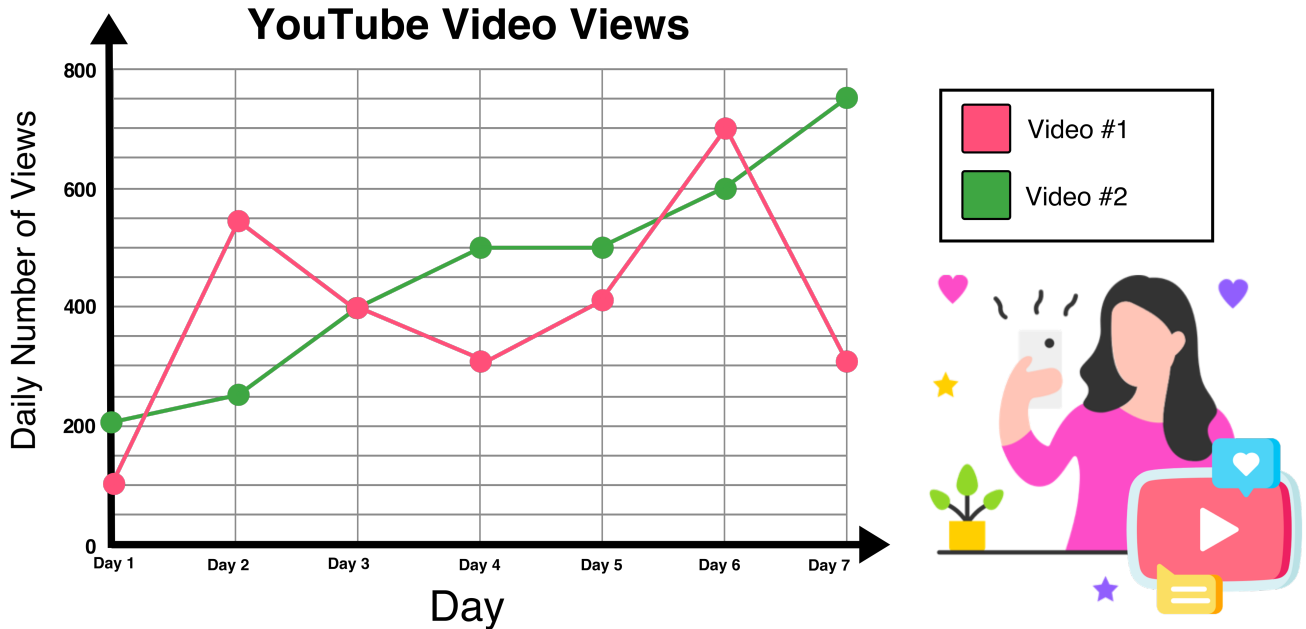


Name: _____

Analyzing Double Line Graphs

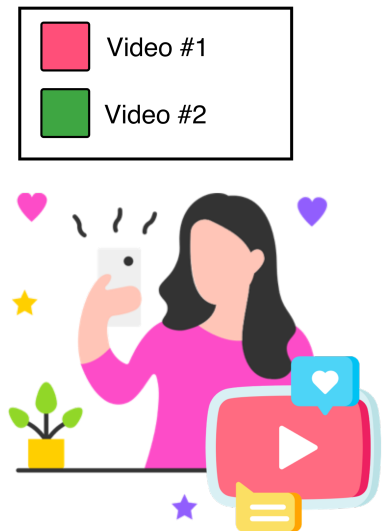
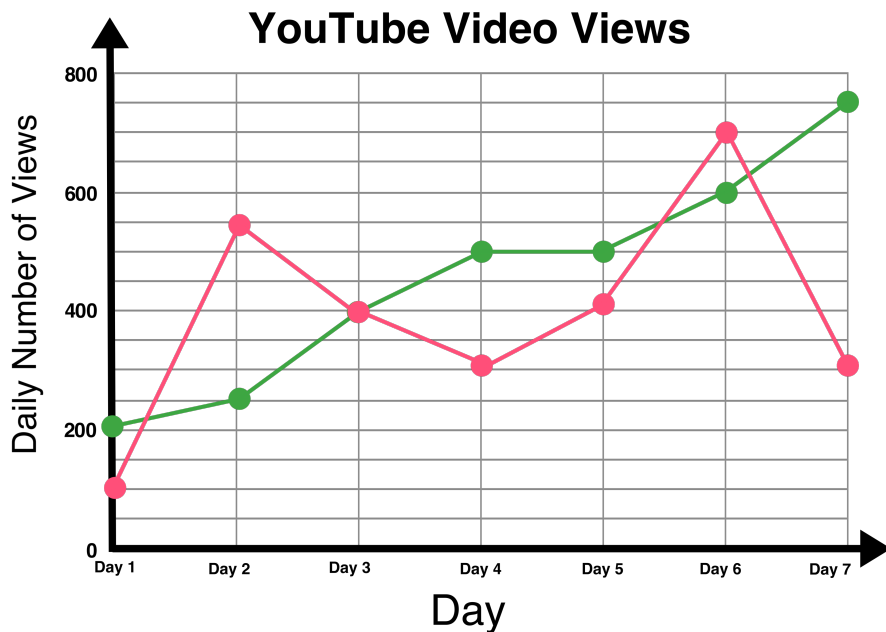
Use the double line graph below to answer the questions that follow.



- 1.) What day did Video #1 have the **most** views? _____
- 2.) What was the total number of views for both videos combined on Day 2? _____
- 3.) On what day did both videos have the same number of views? _____
- 4.) How many more views did Video #2 have than Video #1 on Day 7? _____
- 5.) Which day had the **greatest** difference of the number of views between Video #1 and Video #2. _____
- 6.) How many total views did Video #2 receive from Day 4 to Day 7? _____
- 7.) Give one possible reason why Video #2's view totals steadily increased from Day 1 to Day 7. _____



ANSWER KEY



- 1.) What day did Video #1 have the **most** views? Day 6
- 2.) What was the total number of views for both videos combined on Day 2? 800 views
- 3.) On what day did both videos have the same number of views? Day 3
- 4.) How many more views did Video #2 have than Video #1 on Day 7? 450 more
- 5.) Which day had the **greatest** difference of the number of views between Video #1 and Video #2. Day 7
- 6.) How many total views did Video #2 receive from Day 4 to Day 7? 2,350 views
- 7.) Give one possible reason why Video #2's view totals steadily increased from Day 1 to Day 7.

One possible reason why Video #2's view totals steadily increased from Day 1 to Day 7 is because Video #2 was being shared more on social media and more people were discovering it each day.