

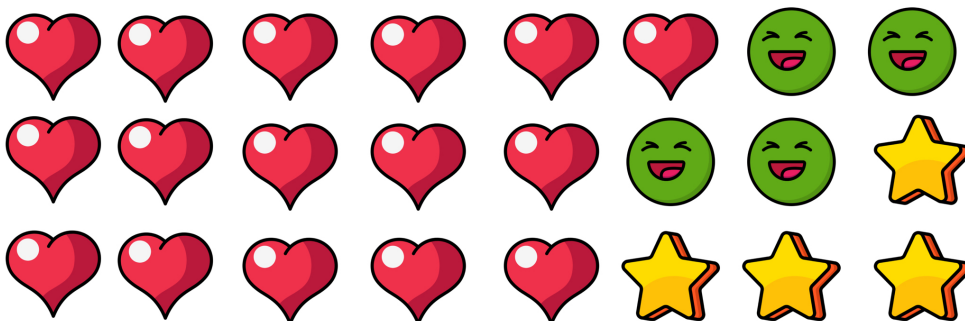
Name: _____

Date: _____



Find the Fib!

Use your math skills to determine which of the three statements below is a fib! Explain how you made your decision.



A) 17 

B)  SAME AS 

C)  LESS THAN 

My Answer: _____

Key: A



Looking for more Kindergarten Math Worksheets?

This activity is a free sample from the Pre-K and Kindergarten Math Worksheet Libraries available on our membership site.

Visit www.mashupmath.com/membership-plans to learn more and sign-up for a free trial today!

Get Engaging Math Resources to Help Your Students Succeed!

A screenshot of the Mashup Math website interface. It shows a navigation menu with categories like "Grades K-2", "Grades 3-5", and "Grades 6-8". There are also sections for "Elementary (Grades K-6)" and "Intermediate (Grades 4-8)". A "Featured Post" section highlights a "School-Appropriate Math Games to Show Before Break" article. The website is decorated with various math-related icons and a sidebar with links to "K-8 Puzzle Libraries", "Order of Operations", "Multiplication Tables", "Area Models", "Reading & Brain Teasers", "Which One Doesn't Belong?", and "Think, Notice, Wonder". The Mashup Math logo is visible in the bottom right corner of the screenshot.