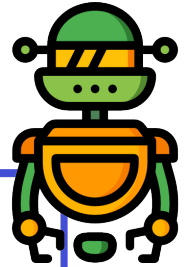


Name: _____

Long Division Practice (No Remainders) (C)

Directions: Use long division to find the quotient of each of the following.



| | | |
|----------------------|---------------------|--------------------|
| $7 \overline{)63}$ | $10 \overline{)40}$ | $4 \overline{)8}$ |
| $5 \overline{)25}$ | $11 \overline{)66}$ | $5 \overline{)15}$ |
| $6 \overline{)54}$ | $9 \overline{)108}$ | $5 \overline{)10}$ |
| $10 \overline{)110}$ | $9 \overline{)36}$ | $8 \overline{)80}$ |

ANSWER KEY

| | | |
|---|--|---|
| $\begin{array}{r} 9 \\ 7 \overline{)63} \end{array}$ | $\begin{array}{r} 4 \\ 10 \overline{)40} \end{array}$ | $\begin{array}{r} 2 \\ 4 \overline{)8} \end{array}$ |
| $\begin{array}{r} 5 \\ 5 \overline{)25} \end{array}$ | $\begin{array}{r} 6 \\ 11 \overline{)66} \end{array}$ | $\begin{array}{r} 3 \\ 5 \overline{)15} \end{array}$ |
| $\begin{array}{r} 9 \\ 6 \overline{)54} \end{array}$ | $\begin{array}{r} 12 \\ 9 \overline{)108} \end{array}$ | $\begin{array}{r} 2 \\ 5 \overline{)10} \end{array}$ |
| $\begin{array}{r} 11 \\ 10 \overline{)110} \end{array}$ | $\begin{array}{r} 4 \\ 9 \overline{)36} \end{array}$ | $\begin{array}{r} 10 \\ 8 \overline{)80} \end{array}$ |