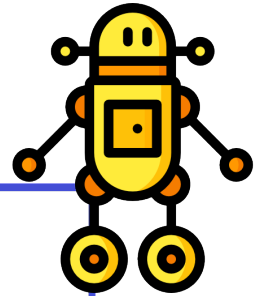


Name: _____

Long Division Practice (No Remainders) (D)

Directions: Use long division to find the quotient of each of the following.



$5 \overline{)40}$	$3 \overline{)78}$	$7 \overline{)28}$
$5 \overline{)95}$	$6 \overline{)60}$	$8 \overline{)120}$
$5 \overline{)80}$	$6 \overline{)42}$	$9 \overline{)81}$
$3 \overline{)75}$	$5 \overline{)100}$	$3 \overline{)51}$

ANSWER KEY

$\begin{array}{r} 8 \\ 5 \overline{)40} \end{array}$	$\begin{array}{r} 26 \\ 3 \overline{)78} \end{array}$	$\begin{array}{r} 4 \\ 7 \overline{)28} \end{array}$
$\begin{array}{r} 19 \\ 5 \overline{)95} \end{array}$	$\begin{array}{r} 10 \\ 6 \overline{)60} \end{array}$	$\begin{array}{r} 15 \\ 8 \overline{)120} \end{array}$
$\begin{array}{r} 16 \\ 5 \overline{)80} \end{array}$	$\begin{array}{r} 7 \\ 6 \overline{)42} \end{array}$	$\begin{array}{r} 9 \\ 9 \overline{)81} \end{array}$
$\begin{array}{r} 25 \\ 3 \overline{)75} \end{array}$	$\begin{array}{r} 20 \\ 5 \overline{)100} \end{array}$	$\begin{array}{r} 17 \\ 3 \overline{)51} \end{array}$