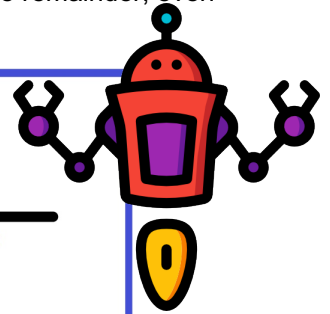


Name: \_\_\_\_\_

## Long Division Practice (Possible Remainders) (C)

**Directions:** Use long division to find the quotient of each of the following. Be sure to include the remainder, even if it is zero.



|                      |                    |                    |
|----------------------|--------------------|--------------------|
| $3 \overline{)13}$   | $4 \overline{)91}$ | $6 \overline{)17}$ |
| $3 \overline{)54}$   | $9 \overline{)71}$ | $6 \overline{)47}$ |
| $10 \overline{)107}$ | $7 \overline{)98}$ | $7 \overline{)29}$ |
| $9 \overline{)29}$   | $7 \overline{)39}$ | $6 \overline{)80}$ |

## ANSWER KEY

|  |  |  |
|--|--|--|
| $\begin{array}{r} 4 \text{ R1} \\ 3 \overline{)13} \end{array}$    | $\begin{array}{r} 22 \text{ R3} \\ 4 \overline{)91} \end{array}$ | $\begin{array}{r} 2 \text{ R5} \\ 6 \overline{)17} \end{array}$  |
| $\begin{array}{r} 18 \text{ R0} \\ 3 \overline{)54} \end{array}$   | $\begin{array}{r} 7 \text{ R8} \\ 9 \overline{)71} \end{array}$  | $\begin{array}{r} 7 \text{ R5} \\ 6 \overline{)47} \end{array}$  |
| $\begin{array}{r} 10 \text{ R7} \\ 10 \overline{)107} \end{array}$ | $\begin{array}{r} 14 \text{ R0} \\ 7 \overline{)98} \end{array}$ | $\begin{array}{r} 4 \text{ R1} \\ 7 \overline{)29} \end{array}$  |
| $\begin{array}{r} 3 \text{ R2} \\ 9 \overline{)29} \end{array}$    | $\begin{array}{r} 5 \text{ R4} \\ 7 \overline{)39} \end{array}$  | $\begin{array}{r} 13 \text{ R2} \\ 6 \overline{)80} \end{array}$ |